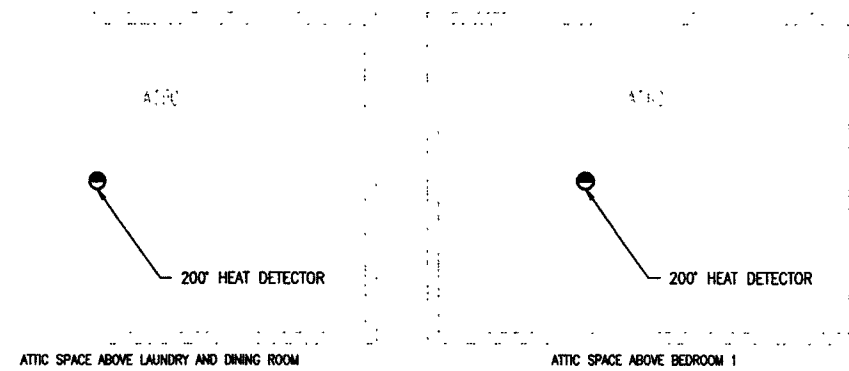
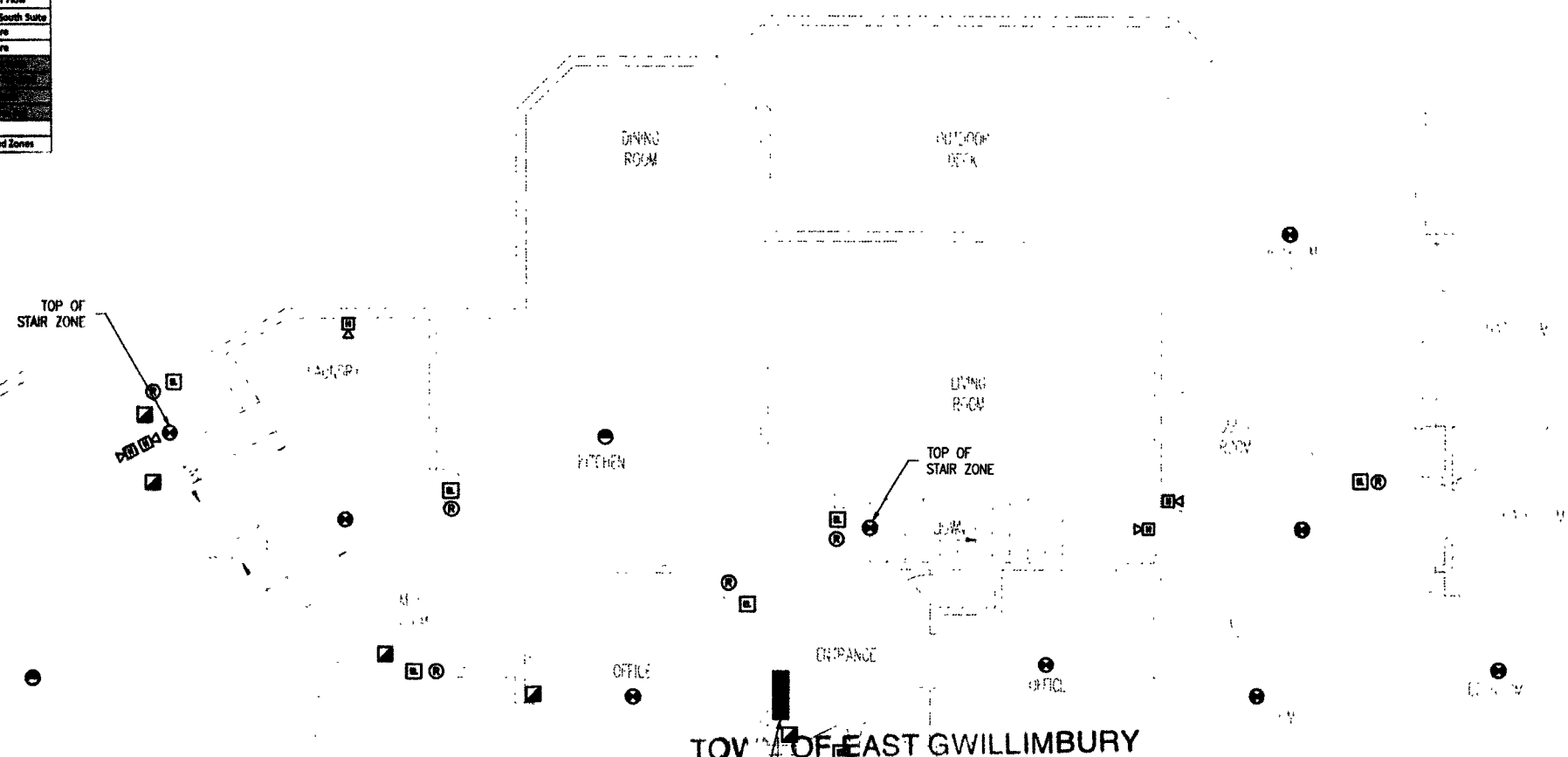


LOCATION OF BACK UP GENERATOR(OUTDOORS IN FENCED YARD)



Symbol	Description
[Square with diagonal line]	OUTLET
[Circle with diagonal line]	...
[Square with dot]	...
[Circle with dot]	...
[Square with cross]	...
[Circle with cross]	...
[Square with X]	...
[Circle with X]	...
[Square with dot]	...
[Circle with dot]	...
[Square with dot]	...
[Circle with dot]	...
[Square with dot]	...
[Circle with dot]	...
[Square with dot]	...
[Circle with dot]	...

Zone	Area	Device
1	Furnace Room	11
2	Garage	12
3	Apartment	13
4	South Stairs	14
5	1st Floor Common	15
6	1st Floor Suites	16
7	North Stairs	17
8	Apartment Stairs	18
9	Attic	19
10	Lower Level Common	20
Supervised Zones		



TOP OF EAST GWILLIMBURY Building Department

These plans have been reviewed for use with the location of fire alarm devices noted. No other changes may be made without the approval of the Building Department. All work must comply with the Ontario Building Code, as amended. These reviewed documents and the Building Permit must be kept on site at all times.

Specified Snow Load _____ Kpa

THESE DOCUMENTS WERE REVIEWED AND

EXAMINED BY: _____

DATE: May 13/16

- ALL ELECTRIC STRIKE LOCKS AND MAG LOCK DEVICES TO BE FAIL SAFE, MEANING IF ELECTRICAL POWER IS INTERRUPTED, THE DEVICE WILL AUTOMATICALLY OPEN.
- ALL ELECTROMAGNETIC LOCK DEVICES TO HAVE EMERGENCY BACK UP POWER INSTALLED TO MAINTAIN POWER AND ACCESSIBILITY TO AREAS SECURED WITH ELECTROMAGNETIC LOCKS.
- ALL ELECTROMAGNETIC LOCKS TO BE CONNECTED TO A FIRE ALARM RELAY CONNECTED AND CONTROLLED BY THE FIRE ALARM PANEL. IN THE EVENT OF LOSS OF POWER TO THE FIRE ALARM PANEL ALL ELECTROMAGNETIC LOCKING MECHANISMS MUST RELEASE IMMEDIATELY.
- IN THE EVENT OF AN ALARM SIGNAL, ALL ELECTROMAGNETIC LOCKS WILL RELEASE IMMEDIATELY.
- IN THE EVENT OF A DETECTED FAULT IN THE ELECTRICAL CIRCUIT BETWEEN THE FIRE ALARM AND THE FIRE ALARM CONTROL PANEL, THE DEVICE WILL RELEASE IMMEDIATELY.
- ALL EXISTING FIRE ALARM DEVICES TO BE CONNECTED AND MONITORED THROUGH THE NEW FIRE ALARM PANEL.
- CONTRACTOR TO COORDINATE AND ADHERE TO CLIENTS REQUIREMENTS.
- HORN AUDIBILITY IN ALL BEDROOMS MUST BE A MINIMUM OF 75dBA IN ALL FOUR CORNERS OF THE ROOM.

EME Engineering Inc, Barrie, Ontario
231 Bayview Dr., Unit L101 L4N1W5

EME ENGINEERING

ELECTRICAL MECHANICAL ENERGY

Kerry's Place
Autism Services
Services en autisme

PRIME CONSULTANT

LICENSED PROFESSIONAL ENGINEER
C. J. LANGFORD
100114456
MAY-4 2016
PROVINCE OF ONTARIO

Drafted by: A.Reedman	Date: 06/10/2015
Design by: A.Reedman	Date: 06/10/2015
Checked by: C.Langford	Date: 05/03/2016

No.	Revision/Issue	Date
1	Issued for Client Review	06/10/15
2	Issued for Client Review	06/15/15
3	Issued for Permit	07/08/15
4	As-Built as per Contractor	05/03/16

Project Info
KERRY'S PLACE
3820 DOANE RD.
MOUNT ALBERT, ON
EME PROJ. #20150139

Drawing Title
FIRST FLOOR LAYOUT

Project Name Kerry's Place	Drawing # E.01
Date 06/10/2015	
Scale HTS	