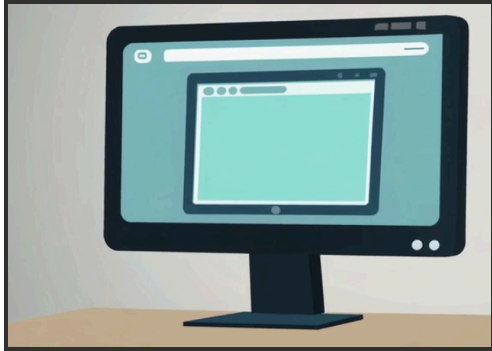
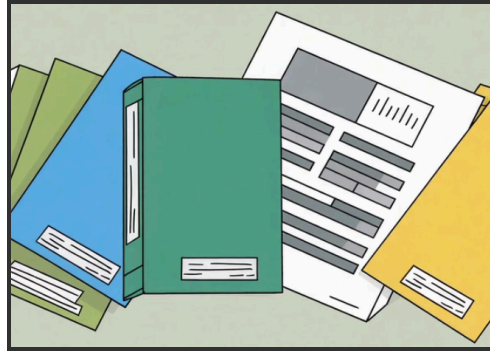


ABUSE REPORTING



Kerry's Place takes suspected abuse seriously and has policies and procedures in place to address this matter. These can be found on our website (kerrysplace.org).



All individuals associated with Kerry's Place have the ability and duty to report abuse.



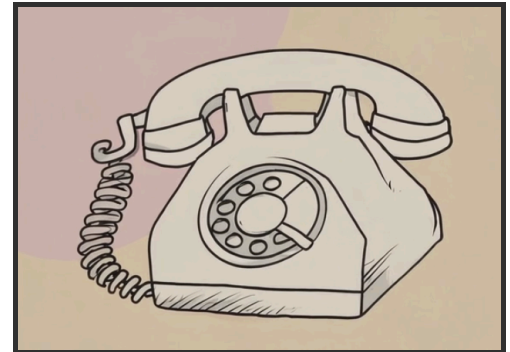
This includes staff, persons supported, agency staff, external contractors, families, friends, and others.



Some examples of abuse include: theft or misuse of money, negligence to provide assistance with safety/wellbeing, physical abuse, sexual abuse, or verbal abuse.



Anyone can always report suspected abuse, and will never get in trouble for doing so.



If anyone suspects abuse for themselves or someone else, or if they just want to learn more about abuse, they should talk to someone they trust. Any Kerry's Place staff is available to support with these discussions if needed.